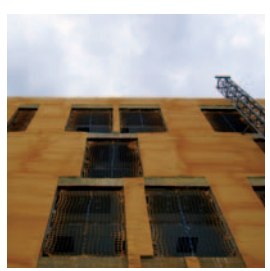
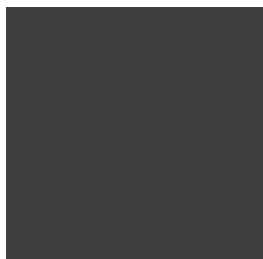




Air Driven Proportioning Unit

evolution G-125A/G-200A



Main Applications: Polyurethane Foam & Coatings - Polyurea



GAMA SPRAY EQUIPMENT
Designed with the Customer in Mind!

evolution G-125A/G-200A

GAMA Proportioners represent the best and most efficient partner for high quality applications

EVOLUTION

The **evolution** series of exclusive designs are the result of an ambitious improvement process based on the experience and knowledge of the market's highest demands that has allowed the incorporation of important technical improvements that give the new units a reliable, high performance and maintenance friendly platform.

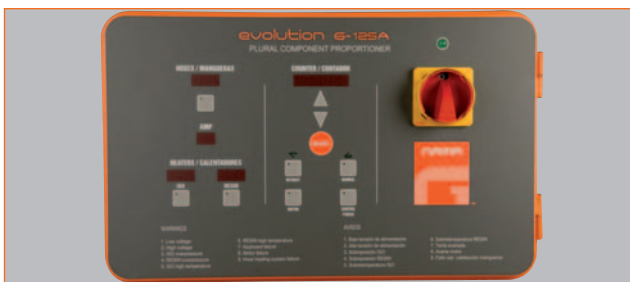
A GAMA PROPORTIONER IS MUCH MORE THAN THE SUM OF ITS FEATURES!

With the evolution **G-125/G-200A**, you not only receive a compact and innovately designed unit, you also receive additional features that will allow you to obtain higher productivity and excellent quality in your applications with complete reliability.

- Total warranty on parts and labor.
- More than 20 years experience in the urethane industry.
- Immediate response to your questions.
- Specialists' technical assistance.
- Ability to adapt to your specific needs.

GAMA parts have been designed and manufactured with the same rigor, quality and attention to detail as the **evolution** units so that they perfectly mate to them to support the most demanding application conditions.

Quality stands out in the details!



FEATURES AND CHARACTERISTICS

The new **evolution G-125/G-200A** air driven proportioning unit is of an advanced and compact design. It is specially aimed at the applications of polyurethane foam in place (G-125A), polyurea and polyurethane coatings (G-200A). Its particular configuration facilities easy access to all its components, simplifies the control functions and significantly reduces the maintenance work.

Primary Heating System

The primary heating system consists of two separate independent block heaters. Each heater incorporates 4 each 1250W (1500W G-200A) heating elements that supply a total power of 5000W (6000W G-200A) with the necessary control and safety features for the accurate and reliable performance of the system. The special design of the heaters allows for a ΔT of 40°C and enables it to reach application temperatures of 90°C in normal environmental temperature conditions.

Hose Heating System

The hose heating system is designed with 3000W isolation transformer that allows the heating of up to 93m. The system incorporates an innovative concept of heated hose in which the copper resistance element is homogeneously spread around the hose. This allows accurate and uniform control of the application temperature of the products and avoids the heat concentrations that are produced in traditionally manufactured hoses.

Control Panel

The control panel consists of a touch screen that incorporates specially designed software to facilitate the selection and control of all working parameters in quick and easy manner. A sophisticated alarm system warns the operation of any error in the process to ensure the right application of the products. As an additional feature, a phase connection alarm is incorporated into the design to avoid costly repairs from errors or mistakes when plugging the proportioner into the electrical supply.

Proportioning Pumps

The proportioning pumps are manufactured from high hardness tempered aluminium and a special treatment that offers a low coefficient of friction, a high level of lubrication, and an increased level of wear resistance. The system includes a common guide system that ensures dynamic stability guaranteeing the correct alignment of the pump group and extending the life of the packing seals.

TECHNICAL SPECIFICATIONS

Maximum Output:	G-125A 9 kg/min	20 lb/min
	G-200A 4 kg/min	9 lb/min
Max. Rated Pressure:	G-125A 125 kgf/cm ² (12,3 MPa)	1780 psi
	G-200A 200 kgf/cm ² (19,7 MPa)	2840 psi
Heating Power:	G-125A 10 Kw	
	G-200A 12 kw	
Hose Heating Power:	3 Kw	
Electrical:	22-26 amps	3x400V 50/60Hz
	43-52 amps	3x230V 50/60Hz
	58-67 amps	1x400V 50/60Hz
Weight:	125 kg	275 lb
Dimensions:	1055 mm x 540 mm x 550 mm	
	41 in 21 in 22 in	

GARRAF MAQUINARIA S.A.

WARNING: the installation and operation of the described equipment should only be done by qualified personnel and strictly following the instructions included in the operating manuals. The information and data given on this brochure is considered to be correct; however, it should not be considered binding nor shall it constitute any explicit or implicit warranty or liability. On its constant effort to improve the design, features and performance of the equipment, GARRAF MAQUINARIA, S.A. reserves its right to make modifications without previous notice.